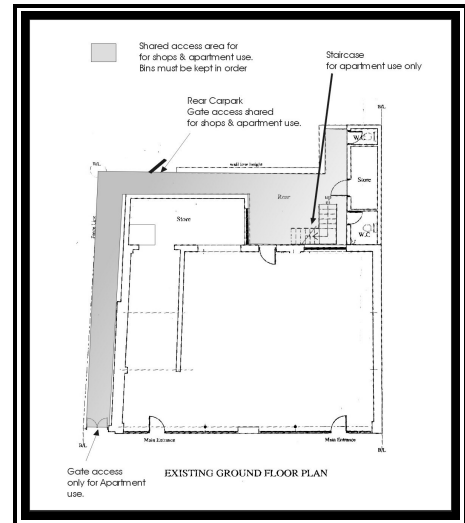


YORK HOUSE

Offices / showroom / 2shops



- Address:** York House
13 – 17 Lichfield Rd
Waterlinks
Birmingham B6 5RW
- Size:** approx 1400sqft
- Building facilities:** The building is dates over 100yrs olds and has been refurbished last year.
Characteristic floor - Original Herring bow Oak floor.
2 toilets, 2 kitchen /staff areas
- Workspace:** The floor space offered as an open plan shell.
- Workstations:** Can hold from 5 to 15 people
- Local Amenities:** Staples walking distance, Post office walking distance
Sandwich Bistro 2 shops away,
By Car: Star City Leisure complex comprising of Restaurants and multiplex cinema 5 minutes away, FORT shopping centre, 5 minutes. Birmingham City Centre 5 minutes.
- Bus Routes:** High Street - in front of Premises with Bus Routes.
- Rent/Lease:** Flexible Terms
- Rent:** Negotiable on deal type.